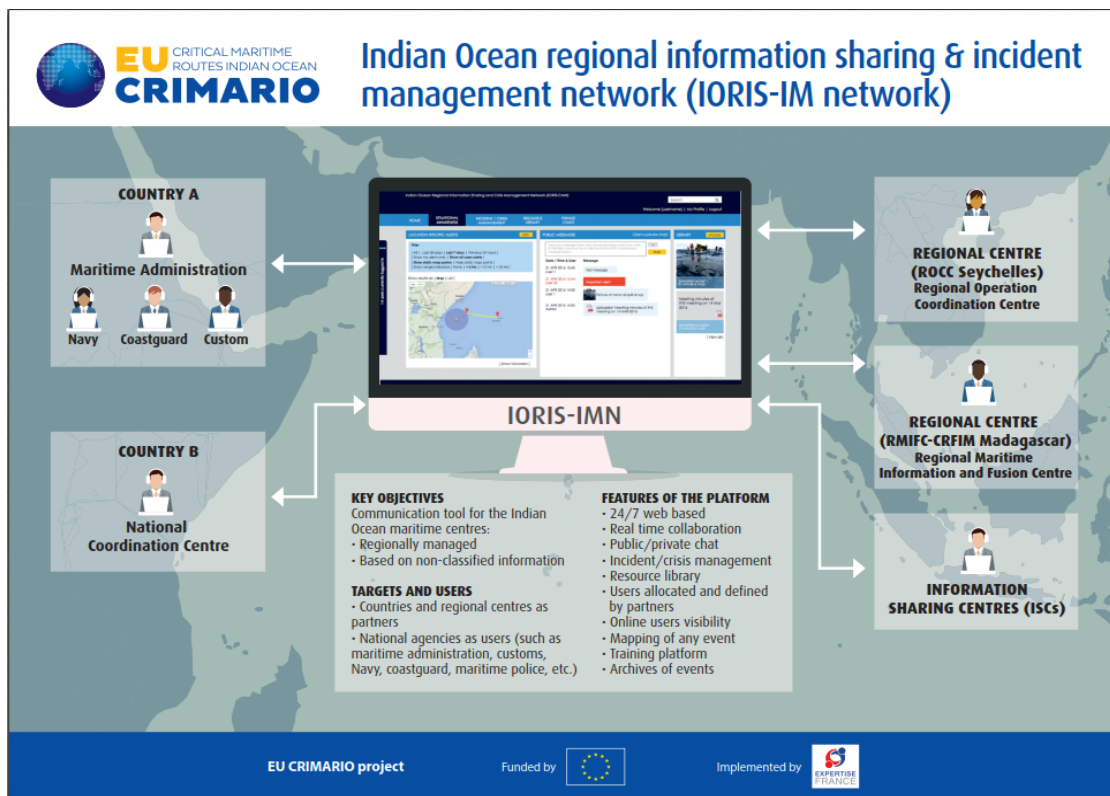


IORIS: the Indian Ocean Regional Information Sharing & Incident Management Network

CRIMARIO has developed IORIS, a web based information sharing tool in collaboration with regional partners, capable of sharing information and managing maritime incidents at both regional and national level. The tool is **regionally owned, regionally managed and regionally located**.



Objective: Enhance maritime safety & security in the IO region through information sharing & incident management

Definition and features

- ✓ Collaboration tool for regional and national centres to exchange non-classified information in a secure environment, as well as a real-time communication that can be utilised for incident management;
- ✓ Real-time information sharing / Collaboration / Incident management / Public or private chat environment / Resource library / File sharing / Public facing web page / Advanced mapping functions / Training platform / Archive of events / Form customization / Pre-defined business logic / Security features / etc.;
- ✓ Solution design focused on minimizing recurring/future running costs for long term sustainability;
- ✓ Inputs from many regional partners have been incorporated into the design;
- ✓ Fully funded and supported by EU CRIMARIO for at least 2 years from 'Go Live' date;
- ✓ Future development planned for 2018 responding to initial user feedback to improve functionality.

Implementation timeline

- ✓ Contract has been awarded to Polymorph Ltd, Runcorn, Cheshire, UK
- ✓ Clarification meeting with contractor / CRIMARIO and host countries by end November 2017 (tbc)
- ✓ September to December 2017 – IORIS development phase
- ✓ **First quarter 2018 – Testing – Acceptance tests – Go live**



- ✓ Identity/brand
- ✓ Key contacts
- ✓ Featured documents
- ✓ Management of incidents
- ✓ Presence awareness (who's online)
- ✓ Instant messaging/group & private chat
- ✓ Form submission
- ✓ File upload / file share incl. images & documents
- ✓ Mapping tools

Partner countries will also have their own secure collaboration area for national requirements.

- ✓ Plot incidents
- ✓ Filter by date or time
- ✓ Show range based on direction of travel and estimated speed where a vessel might be now
- ✓ Plot polygons
- ✓ Nautical charts optional layer
- ✓ Import vessel locations from key sources
- ✓ Export data
- ✓ Full screen views available.



- ✓ End to end encryption of page content
- ✓ Optional two-factor authentication for mobile users
- ✓ IP restrictions
- ✓ Function to store and share encrypted documents.

- ✓ Primary and secondary sites
- ✓ Primary site includes redundancy for web and database server
- ✓ Disaster recovery
- ✓ 24/7 Support services with online monitoring
- ✓ Advanced user and system resource monitoring.

